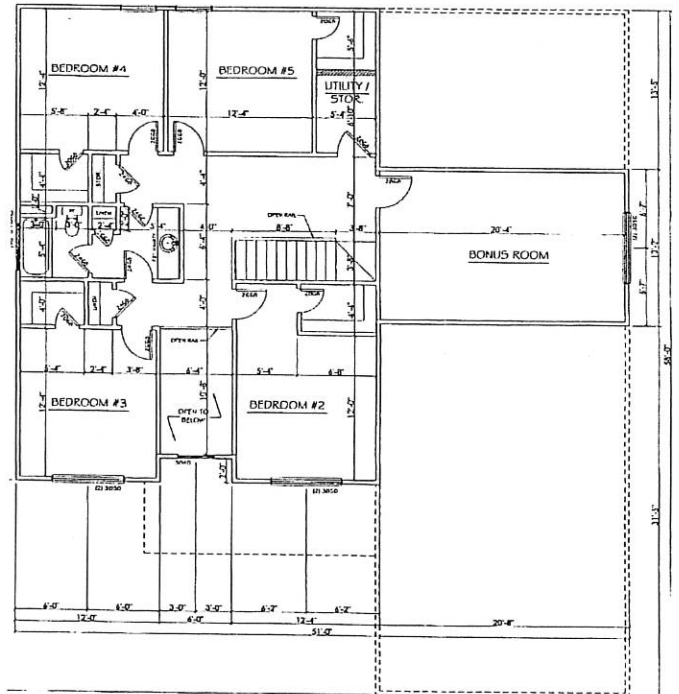


Murdock - Garage Right



AREA CALCULATIONS	
MAIN FLOOR:	1946
SECOND FLOOR:	1094
BONUS ROOM:	272
TOTAL LIVING S.F.:	3314
GARAGE:	536
STOOP:	42
COVERED DECK:	144
TOTAL S.F.:	3864
NOTE:	
▨ = 6" FRAMED WALL	